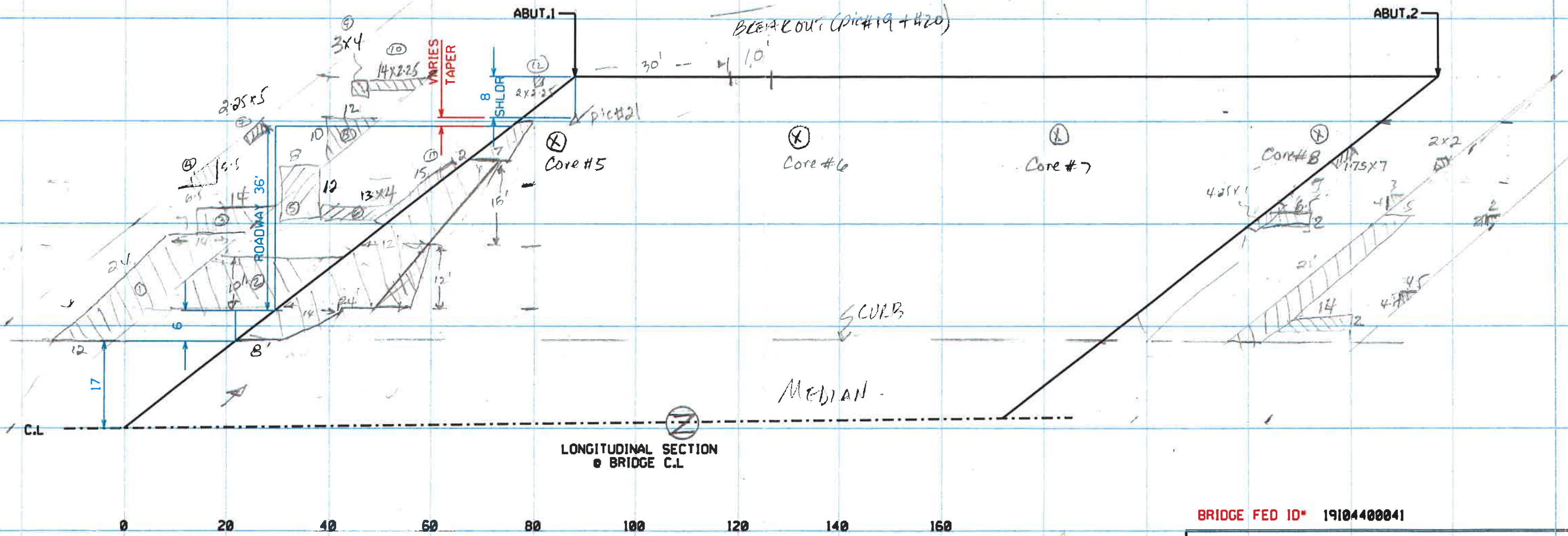


WJBL



LONGITUDINAL SECTION
of BRIDGE C.L.

BRIDGE FED ID* 19104400041

STATE OF TENNESSEE
DEPARTMENT OF TRANSPORTATION
OFFICE OF BRIDGE INSPECTION
AND REPAIR

BRIDGE NO. 19-1440-5.44
CROSSING: BRANDSFORD AVE.

COUNTY: DAVIDSON

DRAWN ASHRAF ARMANIOS
DATE 08-14-2017
SCALE 1:20
SKEW 38°

BRIDGE WIDTH VARIES 133.5' TO 137.5'
BRIDGE LENGTH 172'

WJBL



BRIDGE OVER BRADDFORDB AVE. (MEDIAN)

Pic# 17

pic # 21

PROVIDE
SITING



APPROXIMATE
SITING

S-44 WBL



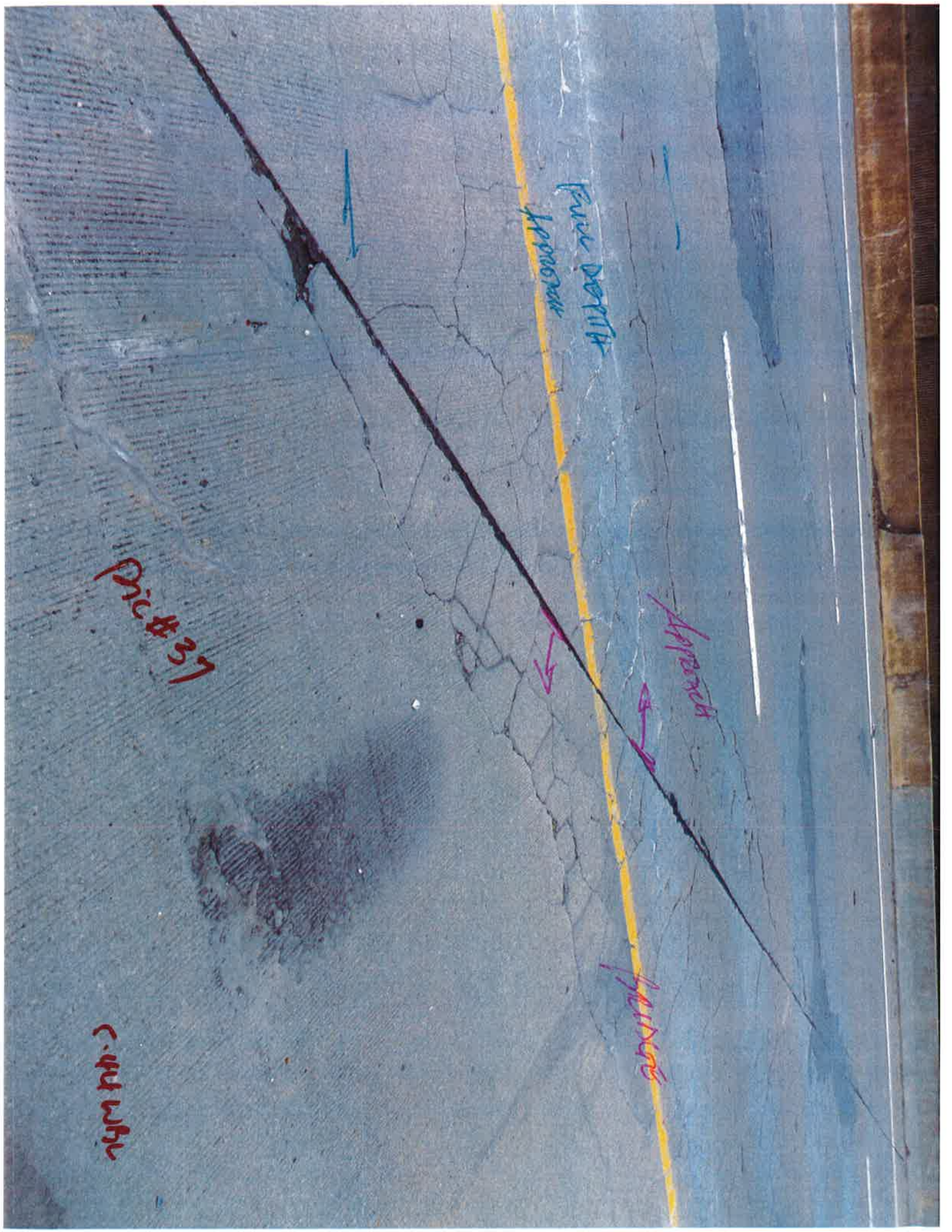
True Depth
Approach

Approach

Approach

Pic # 37

C. 4th 1st





Pic # 19 Breakout about 10' long Left Bridge Rail



Pic. #39 Right Side Bridgerail @ Abut. #1; Bridge No. 19-I440-5.44